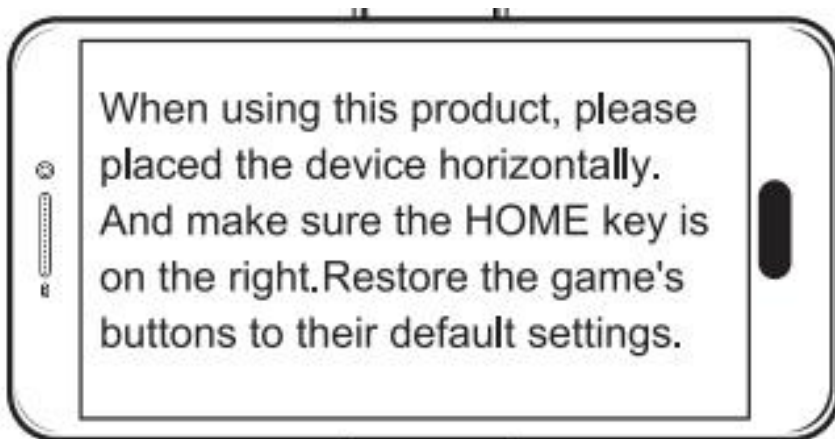


Direct play mode on Android operation and Bluetooth connection

1. Press and hold controller's R1 and HOME button until LED flash quickly.
2. Open setting on your Android mobile, open Bluetooth, find and select the Bluetooth pair name.
3. LED turn on once successfully paired.
4. Then open the downloaded PUBG or similar FPS games and direct play. Below diagram shows the default button value in each game for your reference. The game mode default is PUBG, if you want play other games, please press the combination key switch to other games mode after Bluetooth paired.
5. Please be noted and make sure to keep your Android mobile with the HOME button on the right side. Like below picture.



Besides, please follow the steps reset the game buttons: enter the game setting---Operation setting----customize layout---reset---save the buttons---return the game, then you can use the controller to play the games with default buttons.

6. If buttons still not in position and unable to be played, then please follow the guide video or follow the guide manual as following to adjust the buttons to correct position.

Guide video: <https://www.youtube.com/watch?v=aSpv9NTpC8o>

No#	Game Modes		HOME+A	HOME+X	HOME+R1	HOME+B
	Controller buttons		PUBG	Knief Out	Terminator 2	Cross Fire
	Single key	Cabination key				
1	A		Jump 	Jump	Jump/get off car	Jump
2	B		Squat 	Squat	Squat	Squat
3	X		Lay down 	Lay down	Lay down	Lay down
4	Y		Map 	Map	Map	Map
5	D-pad UP		Pick up equipment	Pick up equipment	System auto detection	Pick up equipment
6	D-pad Down		Revive Open door  	Revive Open door	Revive Open door	Revive Open door
7	D-pad Left		Main Weapon	Main Weapon	Main Weapon	Main Weapon
8	D-pad Right		Secondary Weapon	Secondary Weapon	Secondary Weapon	Secondary Weapon
9	L1	L1+D-pad Left	Turn left 	Turn left	Turn left	no function in this game
10		L1+D-pad Right	Turn right 	Turn right	Turn right	no function in this game
11		L1+ D-pad Up	Drive 	Revive Open door	Drive/revive	Drive
12		L1+ D-pad Down	Get off 	Get off	get off/jump	Get off
13		L1+A	bag 	bag	bag	bag
14		L1+Y	Run 	Run	Run	Run
15		L1+L2	Get in 	Get in	Get in	Get in
16		L1+B	Bullets reload 	Bullets reload	Bullets reload	Bullets reload
17	R2		Fire 	Fire	Fire	Fire
18	R3		Grenade 	Grenade	Grenade	Grenade
19	Right Joystick		Angle view	Angle view	Angle view	Angle view
20		L1+ Right Joystick	Angle of view fine-tuning	Angle of view fine-tuning	Angle of view fine-tuning	Angle of view fine-tuning
21	R1	R1 +Right Joystick	View 	View	View	View
22	L2		Aim 	Aim	Aim	Aim
23	L3		Medicine 	Medicine	Medicine	Medicine
24	Left Joystick		Move 	Move	Move	Move
25	Select		open equipment box 	open equipment box	open equipment box	open equipment box
26	Start		parachute jumping	parachute jumping	parachute jumping	parachute jumping

***If your controller is not the upgraded version, please follow attached manual to download the upgrade software and upgrade the controller.

Touch Screen Display-Game set up illustration V1.01

Foreword: Normally the gamepad buttons are corresponding to buttons on the common mobile phone, but different mobile different screen size may cause some game buttons can not correspond properly, at this time, you have to remap/set up the buttons manually. Most mobile games support button setting, such as PUBG, Cross Fires, Knives Out, Terminator 2 and etc. Below guiding manual will show you how to remap/set up the buttons in games on different brands of Android smartphone (e.g.: PUBG)

Buttons Reset / Remap (e.g.: PUBG):

- 1 Open the Touch Screen Display on mobile setting (refer to the methods as below) to start the game.
- 2 Game setting: Click “Setting”-” Operation Setting”-” Custom Layout” (e.g.:<Left-hand move, right-hand fire>)
- Try to press each gamepad button, and check if all correspond to default buttons listed in manual, if all totally correspond, then no need to modify, in opposite, press gamepad button and see white spot display on mobile, dragging the buttons to the white spot, click Save after all modify, then start to play game.



A: Setting-
Operation Setting-
Custom Layout



B: Custom layout, click
Save after modify



C: Press R2 button, the white spot corresponded to fire position indicate the gamepad buttons should be match to default buttons listed on manual, no need to drag the button position. ↵



D: Press R2 button, the white spot not correspond to fire position indicate the gamepad buttons not match to default buttons listed on manual, need to drag the button position. ↵



E: Drag correctly as shown in the picture. Place it in the center of the fire position and save it after completion. (Other button position settings are the same.) ↵

Tips 1: Enter Training Ground after modify to test if save the button modify.

Tips 2: The setting for button position is completed. If you are not used to the touch screen display, you can turn it off by yourself. If you need to set up the button position again after closing, you need to turn it on. Others have no effect.

How to turn on the touch screen for different brand smart phone;

- **Vivo(X20):** "Settings" -"Additional settings"- "Developer options"- "Show touches"- On/ Off

(Developer Options: "Settings" -"More settings" - "About phone " -"Software version" <continuous clicking 7-10 times to turn on>)

- **OPPO(R9):** "Settings" -"Other settings"- "Developer options"- "Show touches"- On/ Off

(Developer Options: "Settings" - "About phone " -"Build number" <continuous clicking 7-10 times to turn on>)

- **Huawei/ Honor:** "Setting"- "System"- "Developer options"- "Show taps"- On/ Off

(Developer Options: "Settings" - "About phone " -"Build number" <continuous clicking 7-10 times to turn on>)

- **Meizu:** "Settings"- "Additional settings"- "Developer options"- "Show touches"- On/ Off

(Developer Options: "Settings" - "About phone " -"Build number" <continuous clicking 7-10 times to turn on>)

- **Samsung(S7):** "Settings"- "Developer options"- "Show touches"- On/ Off

(Developer Options: "Settings" - "About phone " -"Software information" -"Build number" <continuous clicking 7-10 times to turn on>)

MIUI(Redmi Note 4X): "Settings" -"Additional Settings"- "Developer options"- "Show taps"- On/ Off (Developer Options: "Settings" - "My device " -"All specs" -"MIUI Version" <continuous clicking 7-10 times to turn on>)

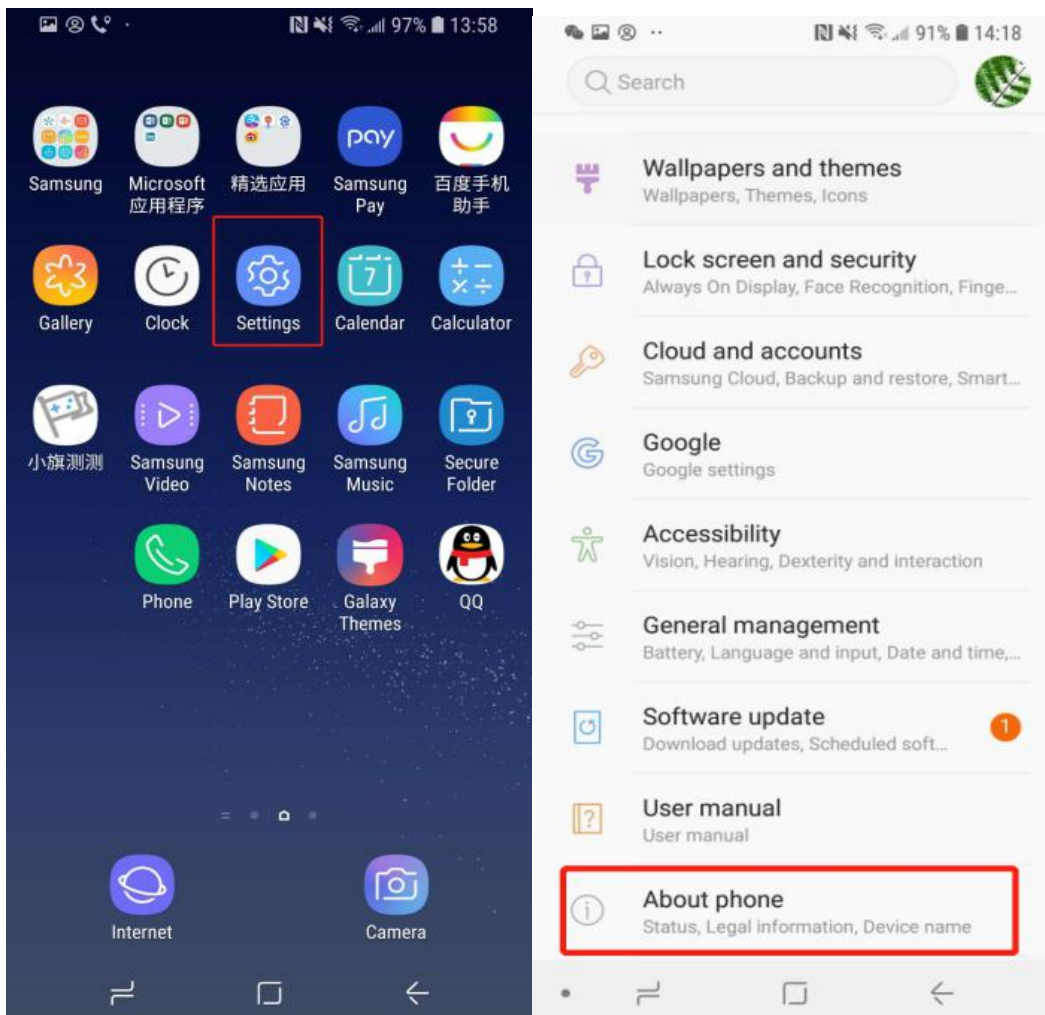
Notes:

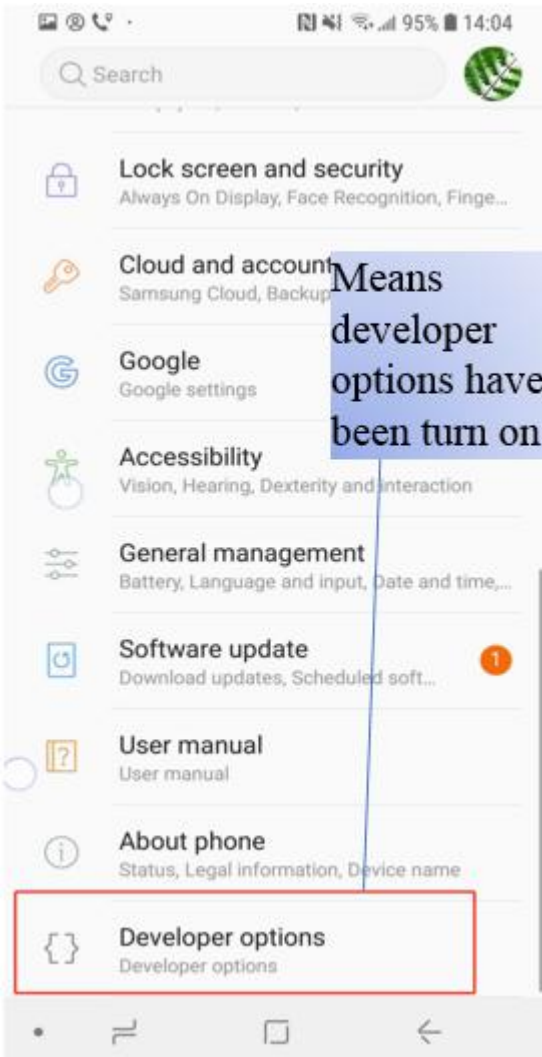
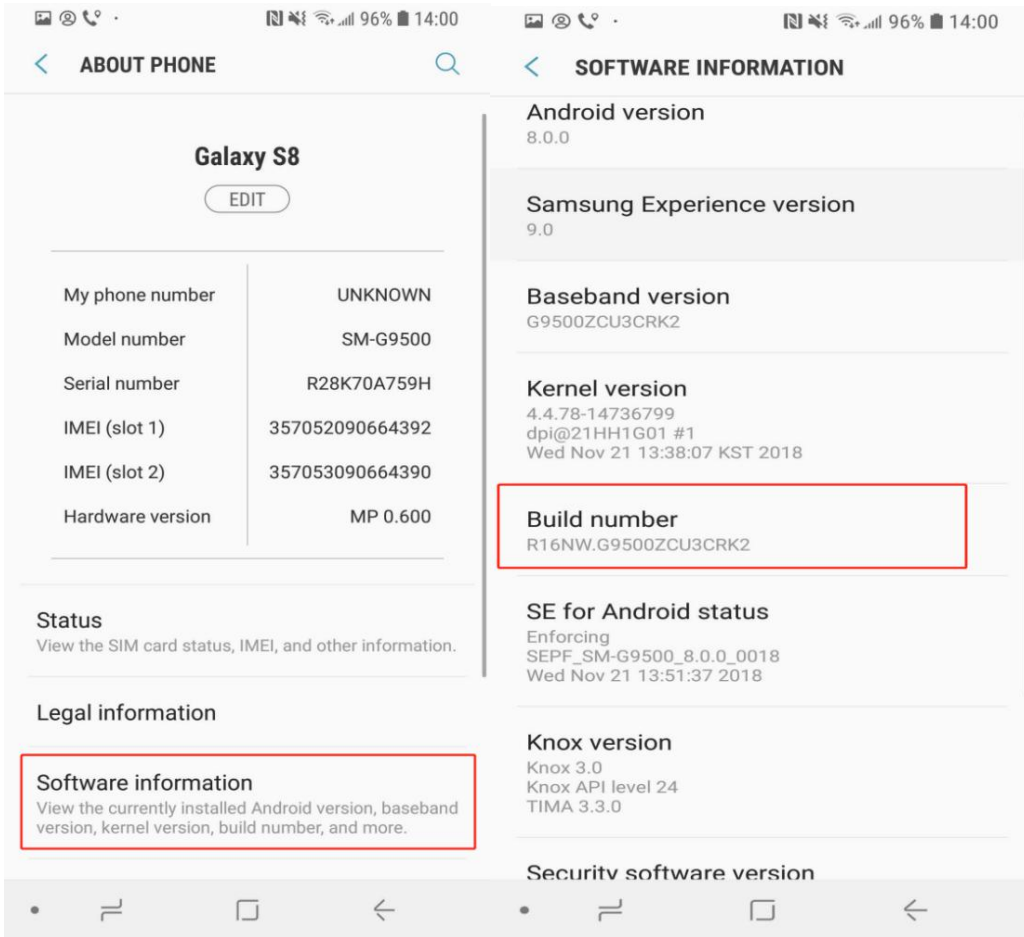
1. Omit other Android cellphone, turn on method is similar with above.
2. After finish Key configuration, "Show touches" can be turned off, setting method is in a similar way
3. Developer Options can be closed by click "close option" (Hide developer options: Clear "Settings" data
4. Above is a abbreviated version, below is detailed description for how to turn on touch display, take

Samsung S8 for example:

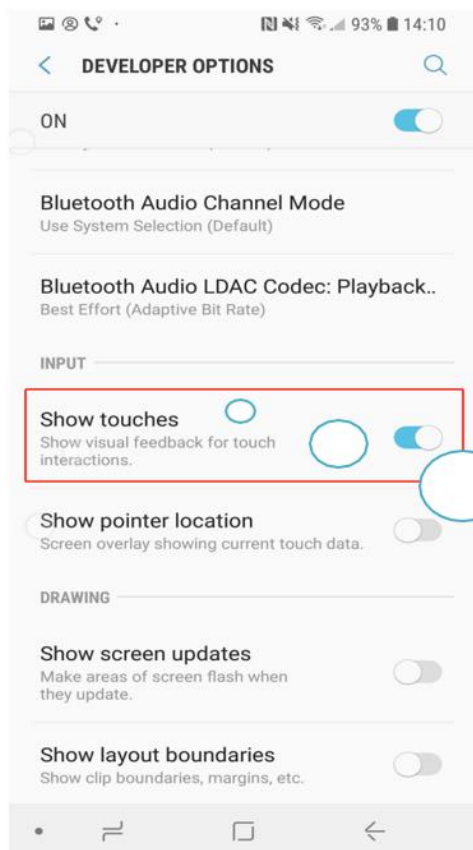
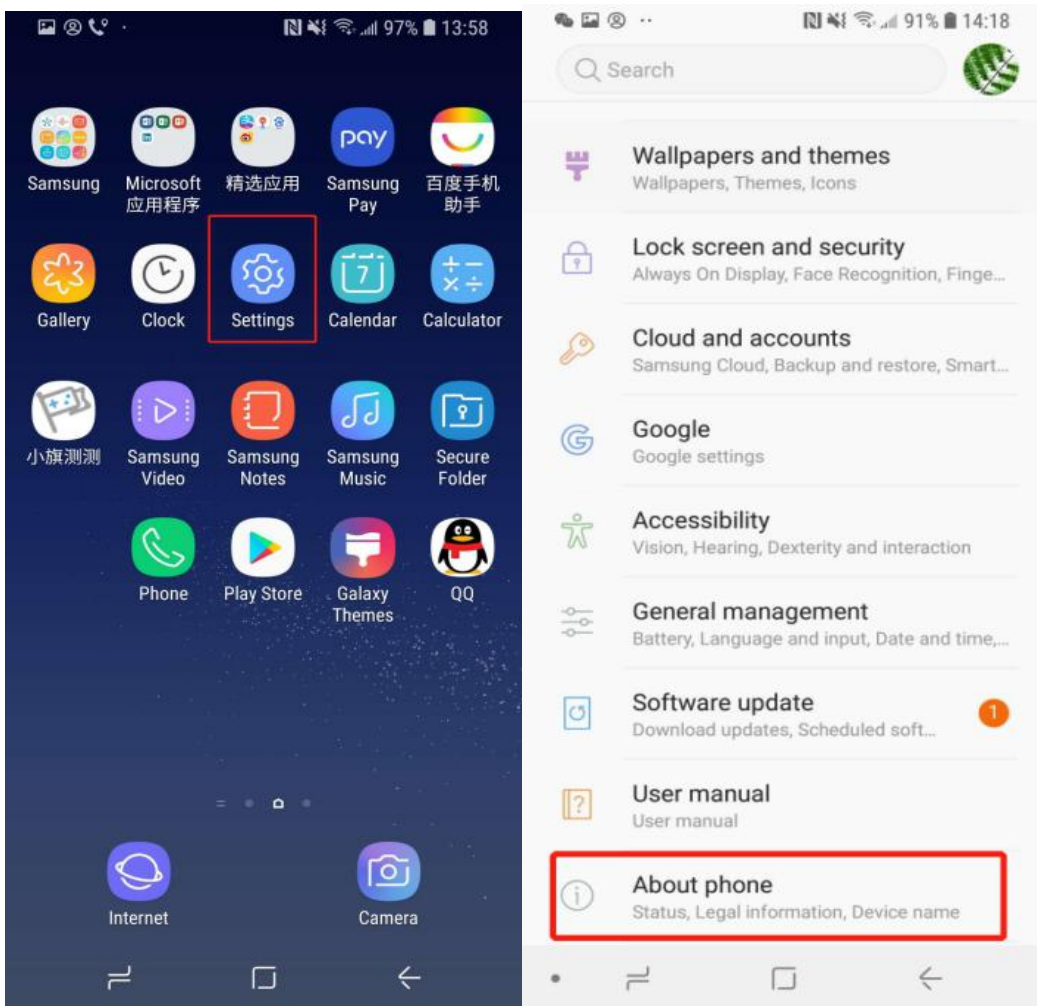
✧ Galaxy S8:

Developer Options: "Settings" - "About phone" - "Software information" - "Build number"
<continuous clicking 7-10 times to turn on>, as the pictures below shows:





Show touch position: "Settings" - "About phone" - "Software info", as pictures below show:



Turn on "show touches", when you press a key of gamepad, there will appear a small white dot on fixed position of your phone, then you can setting keys in games.