



角斗士之手机版

产品说明书(PG-9135)中文版

产品适用说明:

- 1.产品无需多余的游戏平台和复杂的设置与激活操作,只需下载专用APP简单设置即可;(支持安卓6.0以上, iOS11.0以上系统);
- 2.产品适用于Android/iOS手机平板电脑上无线连接时,进行游戏操作时使用;
- 3.适用设备:智能手机/平板电脑/智能电视;
- 4.产品主要应用于格斗/飞行射击等及其他模拟小游戏使用。
- 5.结构符合人体工程学,手感舒适;

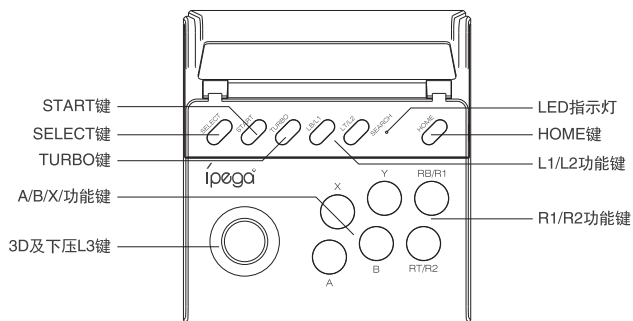
- ★ 因手机系统问题,个别手机可能不支持此设备(如:联发科平台的手机无法支持)
- ★ 因官方游戏平台软件升级或源代码变更等不可抗拒的因素造成部分游戏无法与本产品连接操作,我公司不负任何责任。对此我公司保留最终解释权。

技术支持QQ群: 837350687
客服电话: 0755-2791 8998
在线时间: 周一至周五9:30-17:30



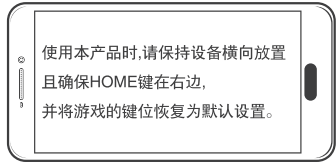
艾派格官方微信公众号
(关注微信号 下载游戏大厅)

功能按键图示:



产品特性参数:

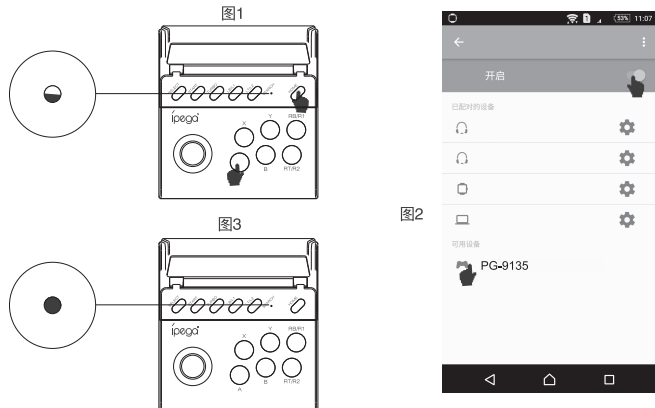
- 1.产品尺寸: L138.6*W124.5*H50.8 mm;
- 2.产品重量: 185g±5g;
- 3.工作电压: DC3.7V;
- 4.工作电流: <15mA;
- 5.静态电流: <10uA;
- 6.持续使用时间: >15H;
- 7.输入电压/电流: DC5V/500mA;
- 8.充电时间: 约3小时;
- 9.无线4.0, 传输距离: ≤8M;
- 10.电池容量: 380mAh;
- 11.待机时间: 满电放置40天;



产品使用说明:

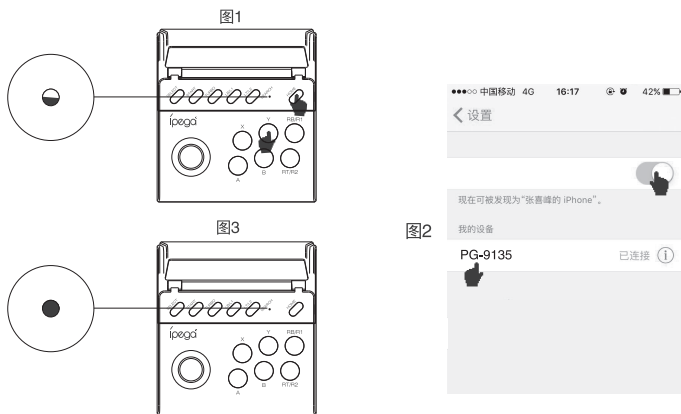
安卓V3 直玩模式:

同时按A+HOME键2秒进入V3直玩配对模式(安卓),手柄LED灯快闪,当安卓手机/平板搜索到“PG-9135”设备名时,选择连接!连接成功后,手柄LED灯常亮!已成功连接过,可以直接按HOME键,LED灯慢闪,自动回连!



IOS V3 直玩模式:

同时按Y+HOME键2秒进入V3直玩配对模式(IOS),手柄LED灯快闪,当苹果手机/平板搜索到“PG-9135”设备名时,选择连接!连接成功后,手柄LED灯常亮!已成功连接过,可以直接按HOME键,LED灯慢闪,自动回连!



安卓/IOS直玩按键映射功能:

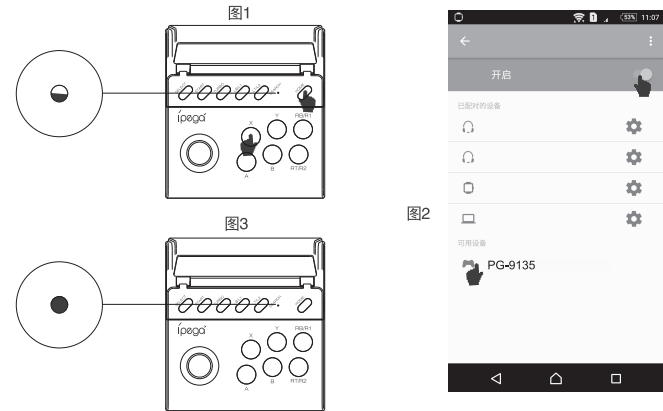
关注公众号(“ShootingPlus”),查看公众号内的默认操作说明,如需设置映射键位,请下载安装“ShootingPlus V3”APP,在APP内进行按键映射以及调整按键位!



ShootingPlus微信公众号
(关注微信号 下载 ShootingPlus app)

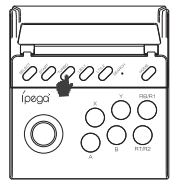
安卓标准游戏模式:

- 1.同时按X+HOME键2秒进入安卓标准游戏配对模式,手柄LED灯快闪,当安卓手机/安卓平板搜索到“PG-9135”设备名时,选择连接!连接成功后,手柄LED灯常亮!已成功连接过,可以直接按HOME键,LED灯慢闪,自动回连!
- 2.安卓标准游戏下载:手机扫描说明书首页二维码关注艾派格官方公众号,按提示下载并安装游戏平台(葡萄游戏厅),进入平台下载所需要的游戏!



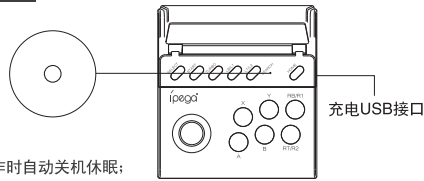
TURBO功能:

- a.动作键包括(A/B/X/Y/L1/L2/R1/R2)八个按键,均可手动设置TURBO功能;
- b.设置方式:长按动作键,再轻按TURBO键开启,长按动作键,再轻按TURBO键, TURBO功能关闭;
- c.产品休眠、关机,重启手柄后,之前设置Turbo功能自动清除,若启用Turbo功能,必须重新设置!



手柄充电/休眠/唤醒/关机功能:

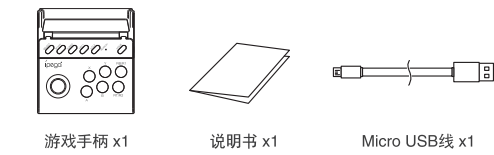
- 1.手柄充电功能:
 - a.低电时,LED指示灯快闪提示;
 - b.充电时,LED指示灯慢闪提示;
 - c.充满时,LED指示灯长亮提示;
- 2.手柄休眠/唤醒/关机功能:
 - a.游戏手柄在5分钟内无任何按键操作时自动关机休眠;
 - b.当需要重新使用时需按HOME键唤醒即可回连;
 - c.在开机状态下,长按HOME键3秒,产品关机,所有LED指示灯熄灭;



注意事项:

- 1.请不要把本产品放在潮湿或高温地方存储;
- 2.不要敲击、摔打、棒打、刺穿,或试图去分解本产品,以免对产品造成不必要的损害;
- 3.产品内置电池,请勿和垃圾一起丢弃;
- 4.不要在靠近火或其它热源的地方对手柄进行充电。
- 5.非专业人员请勿拆卸本产品,否则不在售后保修服务内;

产品清单:



iPega属于PEGA LIMITED所有。

专利号: ZL201930023752.3



Gladiator - Mobile Version

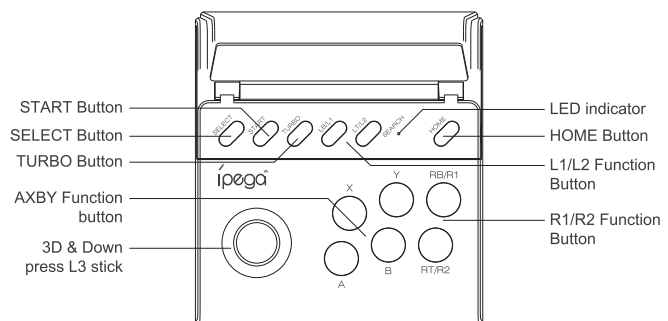
User Manual (PG-9135)

Application instructions:

- 1.Simple operation, no need game platform, no need activation, just need to download APP for button setting;(Support Android 6.0 or above, iOS 11.0 or above)
- 2.The product is compatible with Android/iOS device; Wireless connection, operate while play games;
3. Applicable device: smart phone/tablet/ smart TV;
4. Mainly used for playing fighting games/light shooting games or other simulator games.
- 5.Ergonomic design, feels comfortable;

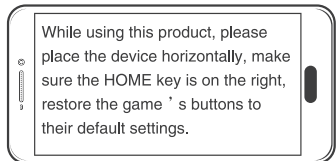
- ★ Due to mobile system issues, some mobile may not support this device(e.g.:mobile under MTK platform do not support)
- ★ Due to the official game platform software upgrades or source code changes and other not resist factors caused some of the game can not be played or connected with our Gamepad, iPega company has no responsibility. iPega reserve the right of final interpretation for this.

Illustration of buttons function



Product Electrical Parameters:

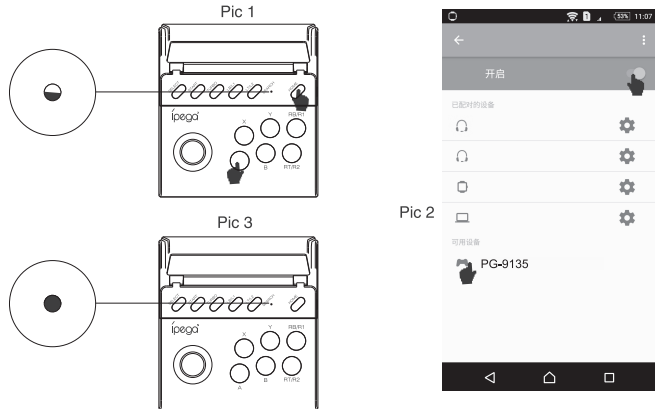
- 1.Product size: L138.6*W124.5*H50.8 mm;
- 2.Product weight: 185g±5g;
- 3.Working voltage: DC3.7V;
- 4.Working current: <15mA;
- 5.Static current: <10uA;
- 6.Working time: >15H;
- 7.Input voltage/current:DC5V/500mA;
- 8.Charging time: about 3 hrs;
- 9.BT4.0, transmission distance:≤8M;
- 10.Battery: 380mAh;
- 11.Standby time: 40days after fully charged;



Operation instructions:

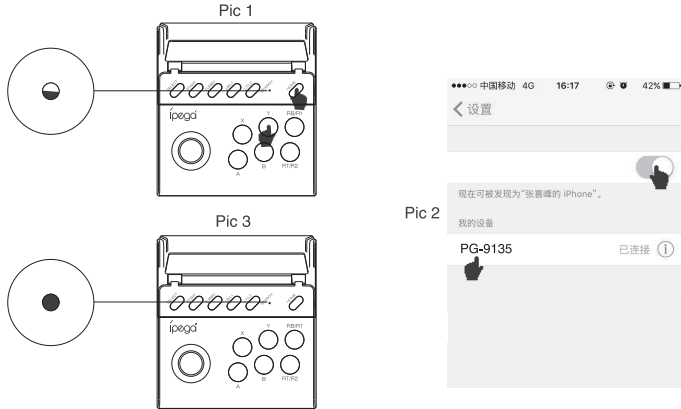
Android V3 mode:

Press A+HOME buttons for 2seconds to enter V3 direct-play mode(Android),LED indicator will flash quickly,seach "PG-9135" on device and pair,when connected successfully, LED indicator will be always on!When gamepad is already connected, you can press the HOME button to reconnect automatically, and LED indicator will flash slowly.



IOS V3 mode:

Press Y+HOME buttons for3 seconds to enter V3 direct-play mode(Ios), LED indicator will flash quickly, search "PG-9135" on device and pair,when connected successfully, LED indicator will be always on!When gamepad is already connected, you can press the HOME button to reconnect automatically, and LED indicator will flash slowly.



Android/IOS button mapping for direct-play mode:

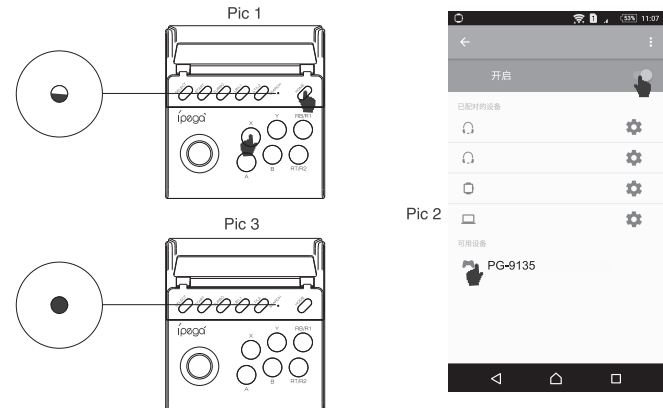
Search "ShootingPlus" in the Apple App Store/Google Play Store, download and install the "ShootingPlus V3" app;



ShootingPlus V3

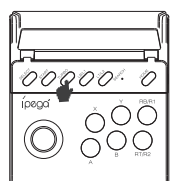
Android HID game mode:

Press X+HOME buttons for 2 seconds to enter Android standard game mode,seach "PG-9135" on Android device and pair, after connected successfully,LED indicator will be always on!When gamepad is already connected, you can press the HOME button to reconnect automatically, and LED indicator will flash slowly. Game platform for Android standard game mode: Octopus



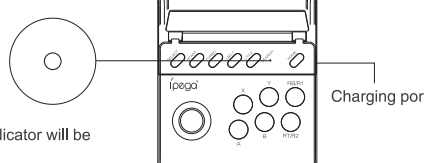
TURBO Function:

- a. Action buttons include (A/B/X/Y/RT/RB/LT/LB), any of the action buttons can be set manually with TURBO function.
- b. Setting method: Press and hold down one of action buttons, and then press the TURBO button to enable the TURBO function; hold down the action button, then press CLEAR button to cancel the TURBO function;
- c. When gamepad is power off, shut down or restarted, the Turbo function is automatically cleared. To enable the TURBO mode, you need to reset it;



Charging/sleeping/wake up/shut down gamepad:

- 1.Charging
 - a.When lower power, LED will indicate to flash quickly;
 - b.When being charged, LED will indicate to flash slowly;
 - c.When being fully charged, LED indicator will be always on;
- 2.Gamepad sleep/wake up/ shut down function:
 - a.The gamepad will be automatically shut down and enter sleep mode if without operation in 5 min;
 - b.To restart operation, you need to press the HOME button to reconnect it;
 - c.When it is turned on, press HOME button for 3 seconds to turn it off, and all the LED indicators will be off;



Notes:

1. Please do not store this product in wet or high-temperature areas.
2. Don't knap, beat, drub, pierce, or try to decompose this product, to avoid unnecessary damage to the product.
3. The product has built-in batteries, and please don't discard them together with the garbages.
4. Don't charge the controller in a place near the fire or other heat source.
5. Non professional personnel should not disassemble the product, otherwise it will not be covered in the after-sales warranty service.

Accessories List



iPega and ePega trademarks all belong to PEGA LIMITED.

Patent No.: ZL201930023752.3