

ipega®

艾派格

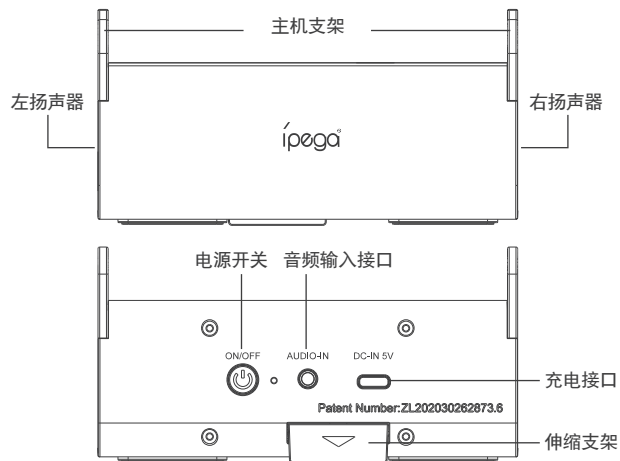
## N-S便携音箱

产品说明书 (PG-SW050)

### 产品特点:

1. 本产品适用于N-S/N-SL主机，有线连接主机播放音频；
2. 配有Type-C充电接口，支持用N-S/N-SL原装适配器为产品充电。
3. 小巧便携，操作简单，可用作N-S/N-SL主机支架；
4. 内置1200mAh可充电电池，支持超长时间待机与播放，连接N-S主机最大连续使用时间约12小时；
5. 产品带伸缩支架，使用时拉出，不用时缩回产品内部；

### 产品图示:



### 产品特性参数:

电池容量 1200MAH  
平均工作电流 100mA  
喇叭尺寸: 直径40MM  
信噪比: 85dB  
喇叭最大失真率: ≤1%  
使用时间 约12H

充电电流 500MA  
喇叭功率: 4欧3W\*2  
灵敏度: 80±3dB  
有效频宽: 80HZ-18KHZ  
充电时间: 4H

### 产品使用说明:

#### 1. 音频播放功能

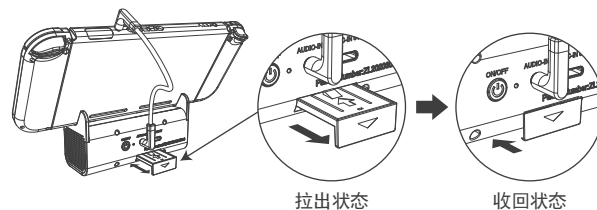
- ① 按下电源键，产品开机指示灯蓝灯闪烁，产品进入工作状态；
- ② 将产品用3.5mm音频线连接至N-S主机，产品播放主机的游戏声音；
- ③ 产品支持边充电边播放；
- ④ 不使用时按下电源键将产品关机；

#### 2. 产品充电功能

产品通过TYPE-C充电口接入5V电源可以给产品充电，充电时红灯常亮，充满红灯灭；

#### 3. 伸缩支架功能

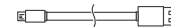
请在把主机放置在主机支架上前，将产品背面的伸缩支架拉出，可防止产品在放置主机时倾倒，不用时可收回。



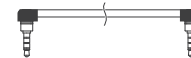
### 配件清单:



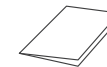
便携音箱 x1



Type-C充电线 x1



3.5mm音频连接线 x1



说明书 x1

专利号: ZL202030262873.6



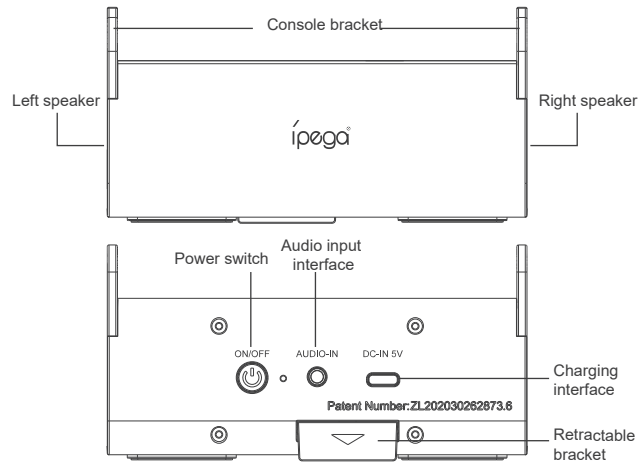
# N-S Portable Speaker

Product Manual / (PG-SW050)

## Features:

1. This product is able to connect to N-S / N-SL console by cable to play audio;
2. It is equipped with Type-C charging interface and can be charged with original N-S / N-SL adapter;
3. Small and portable, easy to operate, and can also be used as N-S / N-SL console bracket;
4. The built-in 1200mAh rechargeable battery enables ultra-long standby and playback. The maximum continuous service time after connecting to N-S console can reach about 12 hours;
5. It is also equipped with a retractable bracket, which can be pulled out when in use and retracted when not in use;

## Product diagram:



## Product characteristic parameter:

Battery capacity: 1200MAH      Charging current: 500MA  
Mean working current: 100mA      Speaker power: 4Ω3W\*2  
Speaker size: Φ40MM      Sensitivity: 80±3dB  
Signal-to-noise ratio: 85dB      Effective frequency bandwidth: 80HZ-18KHZ  
Maximum distortion rate of the speaker: ≤1%      Charging time: 4h  
Service time: About 12h

## Product instructions:

### 1. Audio play function

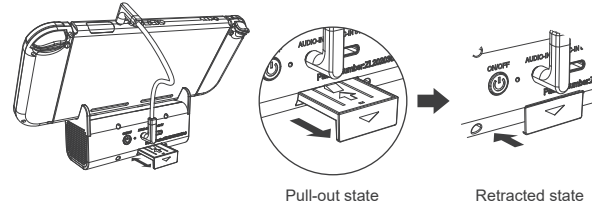
- ① Press the power button, and the blue light will flash, and then the product will enter into the working state;
- ② Connect the product to N-S console with 3.5mm audio cable, and then the game sound of the console will be played;
- ③ The product supports charging while playing;
- ④ When not in use, press the power button to shut down;

### 2. Product charging function

The product can be charged by connecting 5V power supply through the Type-C charging port. When charging, the red light is on, and when it is full, the red light will be off

### 3. Retractable bracket function

Please pull out the retractable bracket on the back of the product before placing the console on the main frame, so as to prevent the product from toppling, and retract the bracket when not in use.



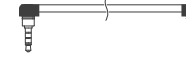
## Parts list:



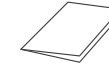
Portable speaker x1



Type C charging cable x1



3.5mm audio connecting cable x1



Instructions × 1

Patent No.: ZL202030262873.6