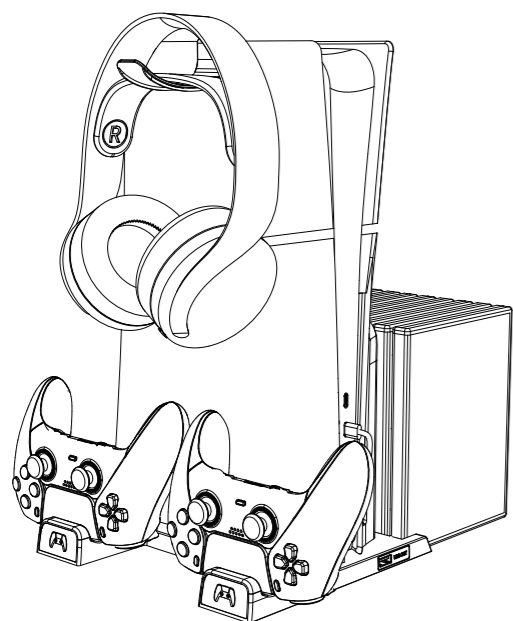


ipega®

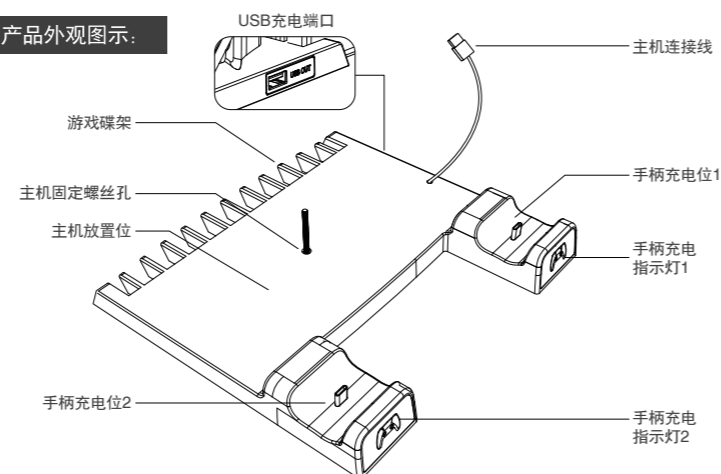
派鲨鱼

P5 Slim多功能底座

产品说明书 (PG-P5S009)



产品外观图示:



产品特点:

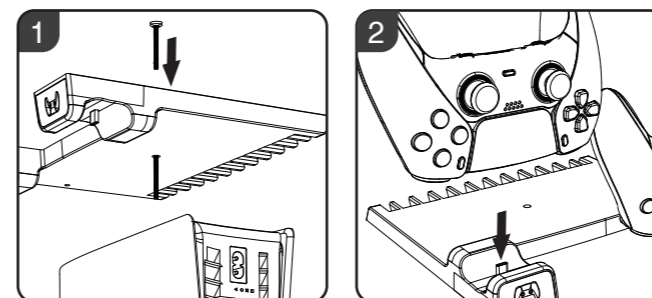
- 1.本产品适用于P5/ P5 Slim数字版与光驱版主机,可用于P5原装游戏手柄(兼容P5精英版手柄)充电及配件收纳等,使各个配件保持整洁。
- 2.带充电指示灯,在充电过程中便于识别充电状态。
- 3.配备两个专用的充电位,与一个扩展充电USB端口。
- 4.产品内置直流升压稳压电路,能持续提供5V稳压充电。
- 5.配备游戏碟架,可放置10个游戏碟,配备耳机支架,可放置耳机,方便拿取。

产品技术参数:

输入电压: DC 5V 输入电流: 2.0A
 充电时间: 约4小时 充电电流: ≤600 mA(单个手柄)

产品使用说明:

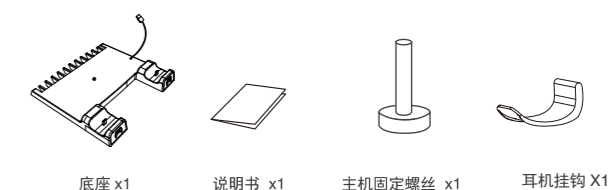
- 1.将P5主机放置在底座上,并从产品底部的主机固定螺丝孔拧入主机固定螺丝,如图1。
- 2.再将底座上的连接线插入P5主机的前置Type-C端口,此时手柄充电指示亮白灯。
- 3.将P5手柄插入底座上的Type-C充电头,此时对应的手柄充电指示灯红灯长亮,开始给手柄充电,充满后亮白灯,如图2。
- 4.配备的USB扩展端口仅有充电功能,无数据传输功能,可以用来给P5手柄充电。



注意事项:

- 1.使用本产品时必须使用P5原装主机提供电源。
- 3.本产品手柄充电功能专为P5原装手柄设计,请勿使用本产品给其他型号手柄充电。
- 4.本产品在使用或存放时,应尽量避开灰尘、重压,以免影响使用寿命。
- 5.本产品因使用不当而造成浸水、撞坏或摔坏,出现电气性能问题,请停止使用。
- 6.本产品不能在潮湿的环境里使用、存放。
- 7.如有损坏请及时送维修部门处理,切勿自行拆卸。

产品清单:

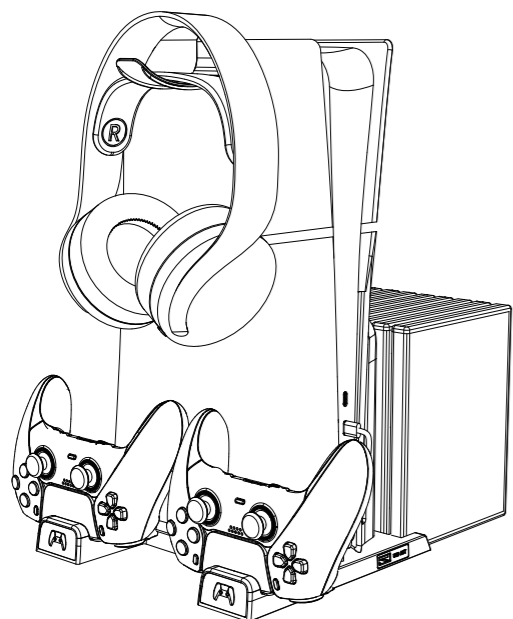


ipega®

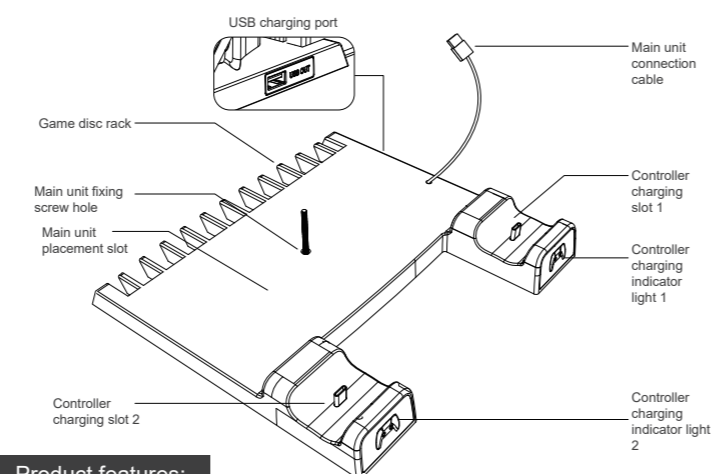
派鲨鱼

Multi-Function Base for P5 Slim

Product Manual (PG-P5S009)



Product appearance diagram:



Product features:

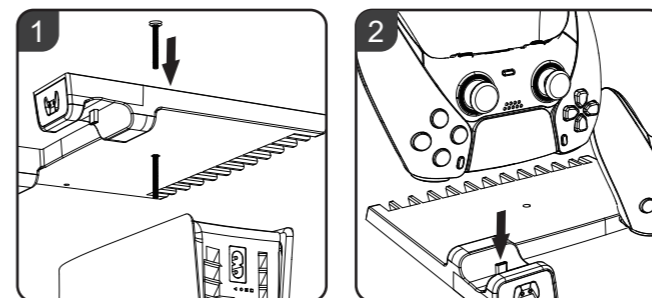
1. This product is suitable for P5/P5 Slim digital and disc versions. It can be used for charging P5 original controllers (compatible with P5 Edge controllers) and for accessory storage, keeping everything tidy.
2. Equipped with charging indicator lights, making it easy to recognize the charging status during charging.
3. Come with two dedicated charging slots and an additional USB charging port.
4. The product has a built-in DC boost and voltage stabilization circuit, providing a consistent 5V regulated charge.
5. Equipped with a game disc rack that can hold 10 game discs, and a headphone holder for easy access.

Product technical specifications:

Input voltage: DC 5V Input current: 2.0A
 Charging time: Approximately 4 hours Charging current: ≤600 mA (per controller)

Usage instructions:

1. Place the P5 console on the base and screw in the securing screw from the bottom of the product into the main unit securing screw hole, as shown in Figure 1.
2. Connect the main unit cable from the base to the front Type-C port of the P5 console. The controller charging indicator will then light up in white.
3. Plug the P5 controller into the Type-C charging connector on the base. The corresponding controller charging indicator light will stay lit in red, indicating that charging has started. When fully charged, the light will turn white, as shown in Figure 2.
4. The provided USB extension port has only a charging function and does not support data transfer. It can be used to charge the P5 controller.



Precautions:

1. When using this product, the original P5 console must supply power.
3. The controller charging function of this product is specifically designed for the original P5 controller. Do not use this product to charge other models of controllers.
4. When using or storing this product, avoid dust and heavy pressure to prevent affecting its lifespan.
5. If the product gets wet, damaged by impact, or broken due to improper use, resulting in electrical performance issues, please stop using it.
6. Do not use or store this product in a humid environment.
7. If damaged, please send it to the service department for repair immediately. Do not attempt to disassemble it yourself.

Product List:

