

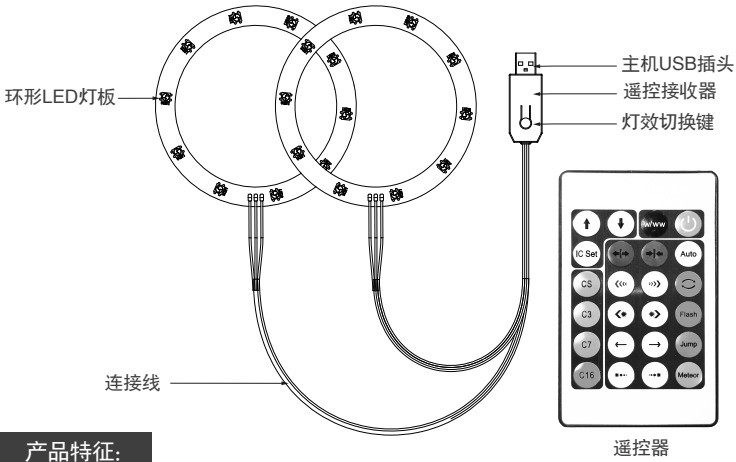
ipega®

派鲨鱼

炫彩遥控氛围灯

产品说明书 (PG-P5S038A)

产品外观图示：



产品特征：

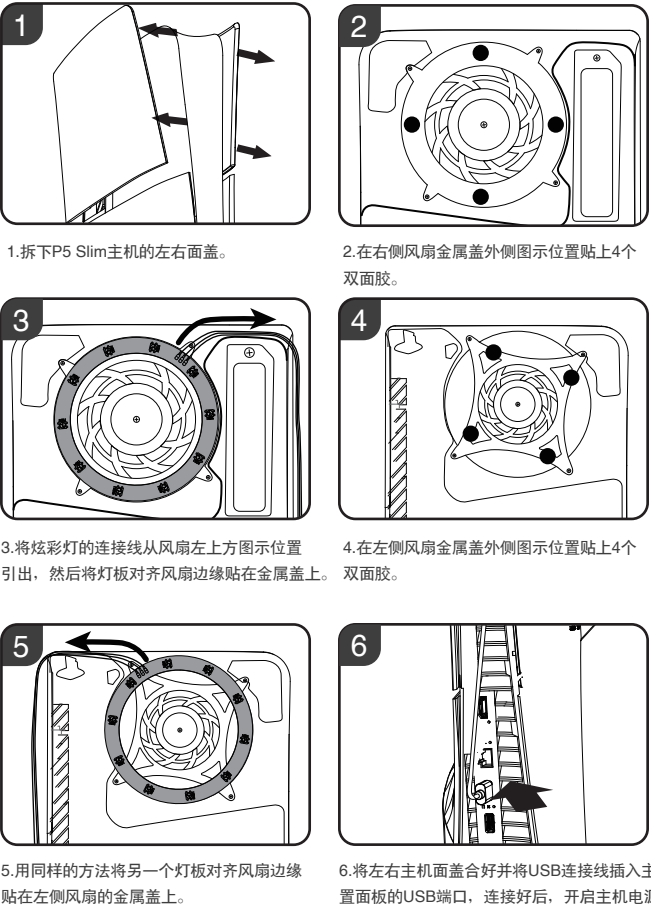
- 1.本产品适用于P5/P5 slim主机，兼容数字版和光驱版。
- 2.这款炫彩氛围灯有多种颜色和灯光效果供您选择，可通过手机APP、遥控器或USB按键控制LED灯，DIY模式下您可以根据自己的喜好通过手机APP个性化灯光效果。
- 3.装配简单且易于使用。

产品特性参数：

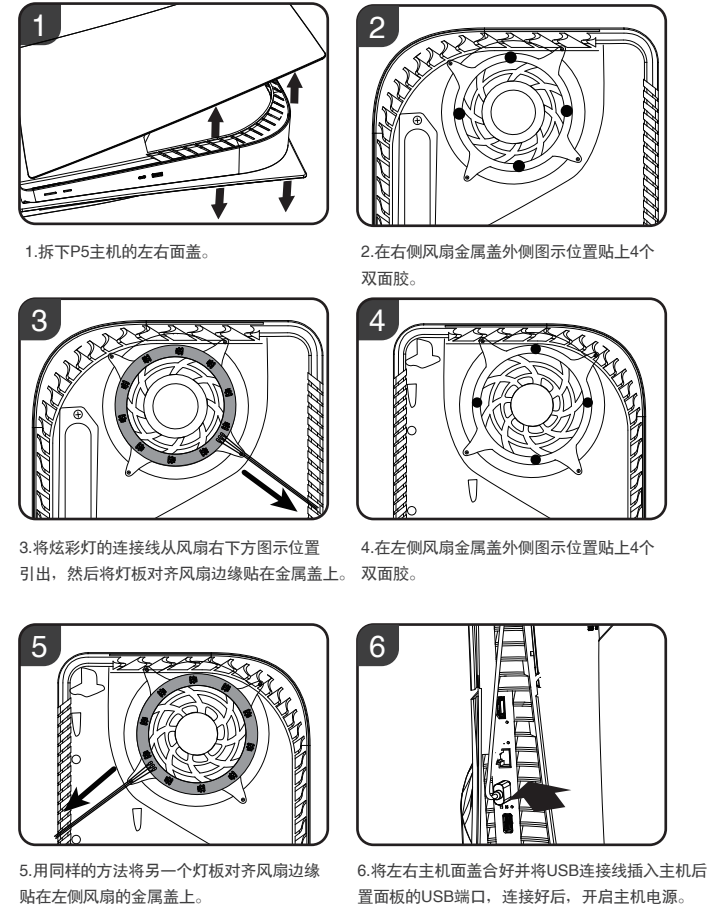
输入电压：DC 4.75-5.25V
遥控距离：<5米

工作电流：≤300mA
待机电流：<10mA

P5 slim主机装配说明：



P5主机装配说明：



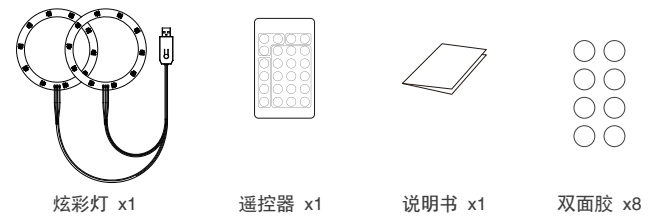
产品使用说明：

- 1.与P5/P5 slim主机连接好后将主机开机，两侧的炫彩灯点亮开始工作。
- 2.按USB接收器上的灯光模式切换键或通过遥控器可切换不同颜色的灯光或灯效模式。
- 3.长按USB接收器上的灯光模式切换键3秒，将保存当前灯光模式并熄灯；关机断电时自动保存当前灯光模式，再次开机时进入最近一次断电前保存的灯光模式。
- 4.通过附带的遥控器，可远距离控制炫彩灯，切换不同颜色的灯光或灯效模式。
- 5.扫描USB接收器上二维码下载并安装灯光控制APP，打开安装好的app，根据app内的操作指引连接手机与炫彩灯，连接成功后，可手机app控制炫彩灯，在app内可自由选择不同颜色的灯光或灯效模式，并支持DIY模式自定义灯效。

注意事项：

1. 请不要把本产品在潮湿或高温地方存储。
2. 不要敲击、摔打、刺穿、或试图去分解本产品，以免对产品造成不必要的损害。
3. 非专业人员误拆卸本产品，否则不在售后保修服务内。
4. 产品内有电容等电子材料，不可随便丢弃，须集中给有资质的回收机构。
5. 因不可抗拒的因素造成部分产品无法连接操作，我公司不负任何责任，对此我公司保留最终解释权；

产品清单：



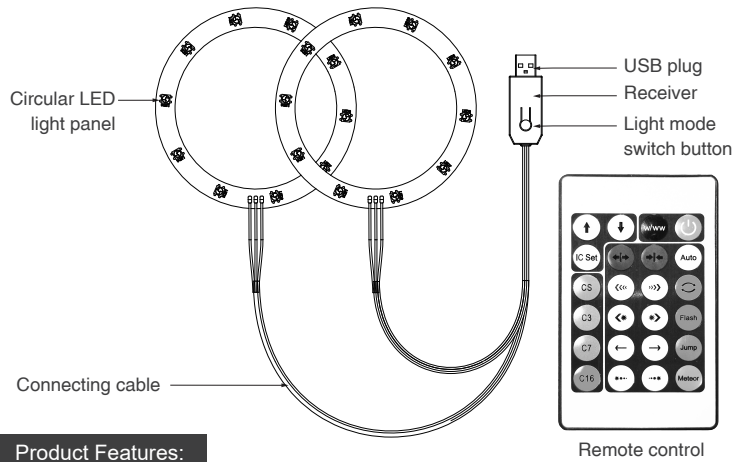
ipega®

派鲨鱼

RGB LED Light Strip

User Manual(PG-P5S038A)

Product Illustration



Product Features:

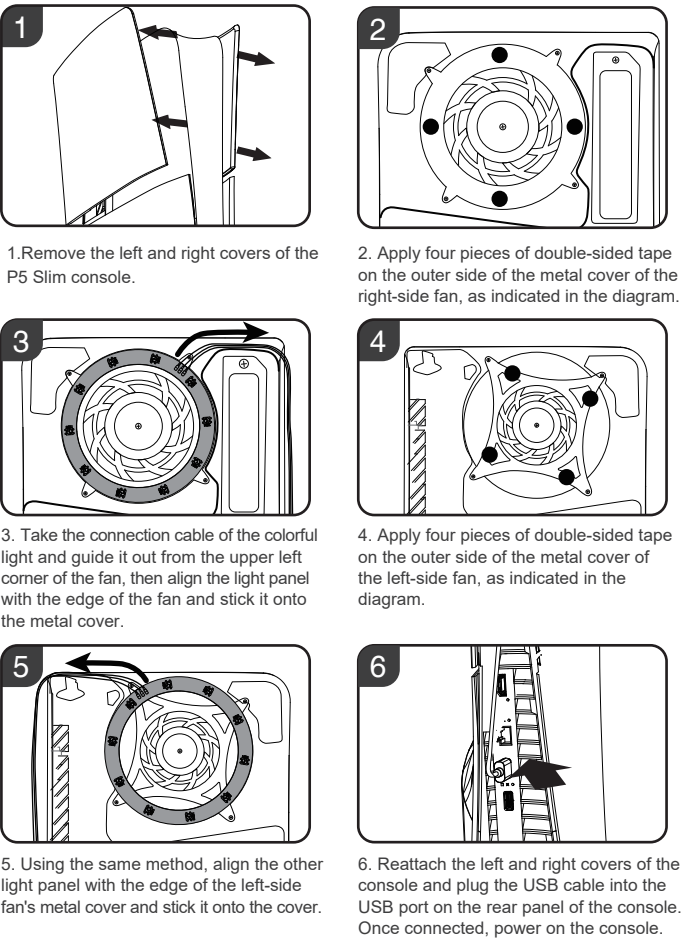
1. This product is specifically designed for the P5 / P5 slim console, compatible with the digital and disc versions.
2. The LED light offers a variety of colors and lighting effects for you to choose from. In DIY mode, you can personalize the lighting effects according to your preferences through a mobile app.
3. The assembly is simple and easy to use. You can control your LED lights through a mobile app, remote control, or USB buttons.

Specifications:

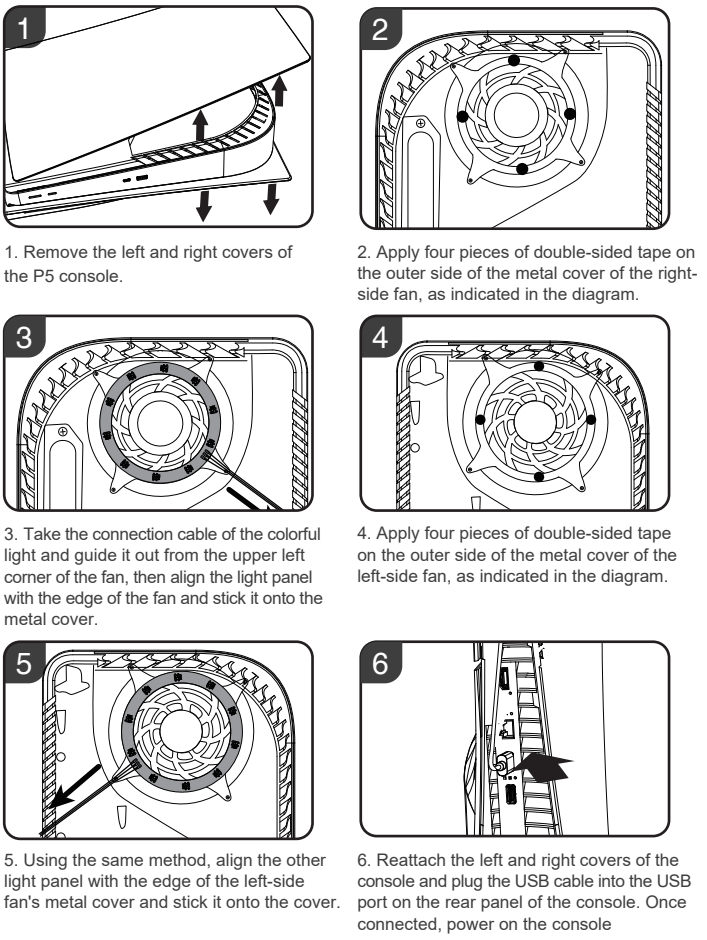
Input Voltage: DC 4.75-5.25V
Remote control distance: <5 meters

Working Current: ≤300mA
Standby current: <10mA

P5 slim console assembly instructions:



P5 slim console assembly instructions:



Product instructions:

1. Once connected to the P5/P5 Slim console, power on the console, and the colorful lights on both sides will illuminate and start working.
2. Use the light mode switch button on the USB receiver or the remote control to switch between different colors of lights or light effect modes.
3. Long press the light mode switch button on the USB receiver for 3 seconds to save the current light mode and turn off the lights. When the console is powered off and then powered on again, it will enter the last saved light mode before the power was cut off.
4. With the included remote control, you can control the colorful lights from a distance, switching between different colors of lights or light effect modes.
5. Scan the QR code on the USB receiver to download and install the light control app. Open the installed app and follow the instructions to connect your phone to the colorful lights. Once connected successfully, you can control the colorful lights through the mobile app. The app allows you to choose different colors of lights or light effect modes and supports DIY mode for customizing light effects.

Note :

1. Please do not store this product in wet or high-temperature areas.
2. Don't knap, beat, drub, pierce, or try to decompose this product, to avoid unnecessary damage to the product.
3. Non professional personnel should not disassemble the product, otherwise it will not be covered in the after-sales warranty service.
4. The product contains electronic components such as capacitors and should not be casually discarded. Please dispose of it properly by handing it over to qualified recycling organizations.
5. In case some products cannot connect or operate due to uncontrollable factors, our company will not be held responsible. Our company reserves the right to the final interpretation in this regard.

Accessories List

